

# Qualitätskontrollen für Ihre **IVD** Testungen

**Durchflusszytometrie | Hämatologie | HbA1c**  
**Körperflüssigkeiten | Molekular Diagnostik**



## Durchflusszytometrie

CD-Chex Plus® .....	4
CD-Chex CD34® .....	5
CD-Chex Select® .....	6
CD-Chex CD103 Plus® .....	7
CD-Chex CD117® Plus.....	8
CD-Chex TdT Plus® .....	9

## Hämatologie

Para12® Extend.....	11
Para 12® Plus.....	12
STaK-Chex® Plus Retics.....	13

## HbA1c

A1c-Cellular® .....	14
---------------------	----

## Körperflüssigkeiten

Cell-Chex® .....	16
Sperm-Chex® .....	18
Sperm-Chex® Post VC.....	19

## Molekular Diagnostik

MDx-Chex® for BCID2.....	20
MDx-Chex® for BC-GP.....	21
MDx-Chex® for BC-GN.....	21

## Erythrozytensedimentationsrate

ESR-Chex® .....	22
-----------------	----

## Sichelzellenanämie

Sickle-Chex® .....	23
--------------------	----

# Durchflusszytometrie

Parameter	CD-Chex Plus®	CD-Chex CD34®	CD-Chex Select®	CD-Chex CD103 Plus®	CD-Chex CD117® Plus	CD-Chex TdT Plus®
CD1a						x
CD2	x					x
CD3	x					
cCD3						x
CD4	x					x
CD5	x					x
CD7	x					x
CD8	x					x
CD10	x					
CD11b	x					
CD11c	x					
CD13	x					
CD14	x					
CD15	x					
CD16	x					
CD16 CD56	x					
CD19	x					
CD20	x					
CD22	x					
CD23	x					
CD25					x	
CD26			x			
CD30				x		
CD33	x					
CD34 (Progenitor)	x	x				
CD34 (Abnormal)						x
CD38+ / CD45+	x			x		
CD38+ / CD45-				x		
CD41			x			
CD45	x					
CD56	x			x		
CD57			x			
CD58			x			
CD61			x			
CD64			x			
CD71					x	
CD79a			x			
CD103				x		
CD117					x	
CD138				x		
FMC7			x			
HLA-DR	x					
Kappa / CD19	x					
Lambda / CD19	x					
cLambda				x		
MPO			x			
TCR α/β			x			
TCR γ/δ			x			
TdT						x
Lymphozyten	x					
Monozyten	x					
Granulazyten	x					
WBC	x	x	x	x	x	x

# Durchflusszytometrie



## CD-Chex CD34®

CD-Chex CD34 is a ready-to-use, positive procedural control for enumerating CD34 positive cells by flow cytometry. Designed to resemble a patient sample, CD-Chex CD34 contains human leukocytes and erythrocytes in a preservative medium with CD34 positive cells having characteristics similar to human hematopoietic progenitor cells. CD-Chex CD34 is compatible with flow cytometry systems using ISHAGE gating strategies for enumeration of CD34 cells.

### Features

- + Only commercially available CD34 control with three levels
- + Ready to use control; no dilution required
- + Whole blood control resembles patient sample
- + Compatible with flow cytometers using ISHAGE protocol and enumeration kits
- + 30-day open-vial stability
- + 90-day closed-vial stability

### Benefits

- + Helps clinical laboratories meet quality requirements for CD34+ stem cell quantitation
- + Long shelf life reduces the number of shipments and associated costs
- + Established assay ranges provide less room for error
- + Tests a wider range of CD34 enumeration not offered by alternative controls
- + Fewer lot-to-lot correlations saves time and resources
- + Access to *STATS*®, a free interlaboratory quality control program with peer group data comparison and online submission

### Ordering information

Level	Description	Catalog#
Level 1	2 x 1.0 mL	213337
Level 2	2 x 1.0 mL	213347
Level 3	2 x 1.0 mL	213383

Level	Description	Catalog#
Level 1, Level 2	2 x 1.0 mL	213338
Level 1, Level 2	4 x 1.0 mL	213339



## CD-Chex Plus®

CD-Chex Plus is a positive procedural control for immunophenotyping by flow cytometry on BD® Biosciences and Beckman Coulter® flow cytometry systems. It is assayed for 30 parameters including T-lymphocytes, B-lymphocytes, granulocytes, monocytes, NK cells and a normal level of CD34+ cells. The whole blood control is available in two clinically relevant levels of CD4+ cells. CD-Chex Plus is available in vials with pierceable caps for use with automated flow cytometry sample preparation instruments.

### Features

- + Assayed for 30 parameters
- + Available in two clinically relevant levels of CD4+ cells
- + Assayed for a normal level of CD34+ cells
- + Compatible with BD Biosciences and Beckman Coulter flow cytometry systems
- + 30-day open-vial stability
- + 90-day closed-vial stability

### Benefits

- + Helps laboratory meet CLIA guidelines
- + Established assay ranges provide less room for error
- + Reduces the need for labs to hold and validate patient samples for use as a control
- + Fewer lot-to-lot correlations saves time and resources
- + Long shelf life reduces the number of shipments and associated costs
- + Access to *STATS*®, a free interlaboratory quality control program with peer group data comparison and online submission

### Ordering information

Level	Description	Catalog#
Normal	2 x 3.0 mL	213365
Normal	5 x 3.0 mL	213367
CD4 Low	2 x 3.0 mL	213366
CD4 Low	5 x 3.0 mL	213368

Level	Description	Catalog#
CD4 Low, Normal	2 x 3.0 mL	213391
CD4 Low, Normal	4 x 3.0 mL	213369
CD4 Low, Normal	10 x 3.0 mL	213370

# Durchflusszytometrie



## CD-Chex Select®

CD-Chex Select is a positive procedural flow cytometry control assayed for 11 CD markers used for immunophenotyping: CD26, CD41, CD57, CD58, CD61, CD64, FMC7, TCR  $\alpha/\beta$ , TCR  $\gamma/\delta$ , and intracellular CD79a and MPO. The whole blood control features plastic vials with pierceable caps for use with automated flow cytometry sample preparation instruments.

For Research Use Only. Not for use in diagnostic procedures.

### Features

- + Assayed for 11 CD markers, including 2 intracellular markers
- + Plastic vials with pierceable caps for use with automated sample preparation instruments
- + Whole blood control resembles patient sample
- + Compatible with BD Biosciences and Beckman Coulter flow cytometry systems
- + 30-day open-vial stability
- + 90-day closed-vial stability

### Benefits

- + Helps labs meet quality requirements for leukemia and lymphoma immunophenotyping
- + Established assay ranges provide less room for error
- + Compatibility with automated sample preparation instruments improves laboratory workflow and reduces errors
- + Provides the user confidence in instrument results
- + Reduces the need for labs to hold and validate patient samples for use as a control
- + Access to *STATS*®, a free interlaboratory quality control program with peer group data comparison and online submission

### Ordering information

Description	Catalog#
2 x 3.0 mL (Sample 1, Sample 2)	213554
4 x 3.0 mL (Sample 1, Sample 2)	213555



For Research Use Only. Not for use in diagnostic procedures.

## CD-Chex CD103 Plus®

CD-Chex CD103 Plus is a ready-to-use control for evaluating intracellular and surface antigens, including CD103, CD30, CD38, CD56, CD138 and cytoplasmic Lambda, with monoclonal antibody binding by flow cytometry. It is a unique, positive procedural control with two distinct abnormal leukocyte populations: CD45+ and CD45-. CD-Chex CD103 Plus is compatible with BD Biosciences and Beckman Coulter flow cytometry systems.

### Features

- + Only commercially available control assayed for CD103, CD30, CD38, CD56, CD138 and cLambda
- + Ready-to-use control for evaluating intracellular and surface antigens
- + Unique control with two distinct abnormal leukocyte populations: CD45+ and CD45-
- + Compatible with BD Biosciences and Beckman Coulter flow cytometry systems
- + 30-day open-vial stability
- + 90-day closed-vial stability

### Benefits

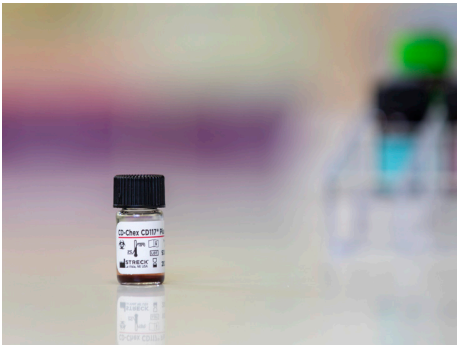
- + Helps clinical laboratories meet quality requirements for leukemia and lymphoma immunophenotyping
- + Established assay ranges provide less room for error
- + Reduces the need for labs to hold and validate patient samples for use as a control
- + Access to *STATS*®, a free interlaboratory quality control program with peer group data comparison and online submission

### Ordering information

Description	Catalog#
1 x 1.0 mL	213567
2 x 1.0 mL	213568



# Durchflusszytometrie



For Research Use Only. Not for use in diagnostic procedures.

## CD-Chex CD117® Plus

CD-Chex CD117 Plus is a ready-to-use control for evaluating surface antigens, including CD117, CD25 and CD71, with monoclonal antibody binding by flow cytometry. It was developed with characteristics similar to abnormal peripheral blood leukocytes often found in a hematolymphoid neoplastic patient sample. It is a positive procedural control that provides assay values for abnormal and total leukocytes. CD-Chex CD117 Plus is compatible with BD Biosciences and Beckman Coulter flow cytometry systems.

### Features

- + Only commercially available control assayed for CD117, CD25 and CD71
- + Exhibits characteristics similar to an abnormal peripheral blood patient sample
- + Provides assay values for abnormal and total leukocytes
- + Compatible with BD Biosciences and Beckman Coulter flow cytometry systems
- + 30-day open-vial stability
- + 90-day closed-vial stability

### Benefits

- + Helps meet quality requirements for leukemia and lymphoma immunophenotyping
- + Established assay ranges provide less room for error
- + Reduces the need for labs to hold and validate patient samples for use as a control
- + Access to *STATS*®, a free interlaboratory quality control program with peer group data comparison and online submission

### Ordering information

Description	Catalog#
1 x 1.0 mL	213557
2 x 1.0 mL	213558





For Research Use Only. Not for use in diagnostic procedures.

## CD-Chex TdT Plus®

CD-Chex TdT Plus is a ready-to-use control for evaluating intracellular and surface antigens including CD1a, CD2, CD4, CD5, CD7, CD8, CD34, cytoplasmic CD3 and nuclear TdT, with monoclonal antibody binding by flow cytometry. It is a positive procedural control that provides reference values for abnormal cells often found in certain types of hematopoietic neoplasms. CD-Chex TdT Plus is compatible with BD Biosciences and Beckman Coulter flow cytometry systems.

### Features

- + Only flow cytometry control assayed for TdT, CD1a, CD34 and cytoplasmic CD3
- + Other assayed markers include CD2, CD4, CD5, CD7 and CD8
- + Offers a high level of abnormal CD34+: over 60% positive
- + Compatible with BD Biosciences and Beckman Coulter flow cytometry systems
- + 30-day open-vial stability
- + 90-day closed-vial stability

### Benefits

- + Helps labs meet quality requirements for leukemia and lymphoma immunophenotyping
- + Helps technologists to identify and gate assayed markers
- + Established assay ranges provide less room for error
- + Reduces the need for labs to hold and validate patient samples for use as a control
- + Access to *STATS*®, a free interlaboratory quality control program with peer group data comparison and online submission

### Ordering information

Description	Catalog#
1 x 1.0 mL	213565
2 x 1.0 mL	213566

Produktname	Parameter
Para 12® Extend	White Blood Cell (WBC), Lymphocyte (LYM, LYM%), MID, MID%, Granulocytes (GRAN, GRAN%), Red Blood Cell (RBC), Hemoglobin (HGB, [HGB]), Hematocrit ([HCT]), Mean Cell Volume (MCV), Mean Cell Hemoglobin (MCH), Mean Cell Hemoglobin Concentration (MCHC, [MCHC]), Red Cell Distribution Width (RDW), Platelet (PLT), Mean Platelet Volume (MPV), Platelet Distribution Width (PDW)
Para 12® Plus	White Blood Cell (WBC), WBC Optical Count (WBC (WOC)), WBC Nuclear Optical Count (WBC (NOC)), Neutrophils (NEUT, NEUT%), Lymphocyte (LYM, LYM%), Monocytes (MONO, MONO%), Eosinophils (EOS, EOS%), Basophils (BASO, BASO%), Red Blood Cell (RBC), Hemoglobin (HGB, [HGB]), Hematocrit (HCT, [HCT]), Mean Cell Volume (MCV), Mean Cell Hemoglobin (MCH), Mean Cell Hemoglobin Concentration (MCHC), Red Cell Distribution Width (RDW), Platelet (PLT), Mean Platelet Volume (MPV)
STaK-Chex® Plus Retics	White Blood Cell (WBC), Neutrophils (NEUT, NEUT%), Lymphocyte (LYM, LYM%), Monocytes (MONO, MONO%), Eosinophils (EOS, EOS%), Basophils (BASO, BASO%), Red Blood Cell (RBC), Nucleated Red Blood Cells (NRBC, NRBC%), Hemoglobin (HGB, [HGB]), Hematocrit ([HCT]), Mean Cell Volume (MCV), Mean Cell Hemoglobin (MCH), Mean Cell Hemoglobin Concentration (MCHC, [MCHC]), Red Cell Distribution Width (RDW%), Red Cell Distribution Width Low-Standard Deviation (RDW-SD), Platelet (PLT), Mean Platelet Volume (MPV), Reticulocyte (Retic, Retic %), Immature Reticulocyte Fraction (IRF)



## Para 12® Extend

Para 12 Extend is a whole blood hematology control which offers complete assay values for the three-part white blood cell differential. It features vials with pierceable caps for autosampling and is available in low, normal and high levels. Para 12 Extend is compatible with Beckman Coulter®, Erma, Horiba® Medical, HTI® Diagnostics, Mindray®, Nihon Kohden® and Siemens® three-part hematology analyzers.

### Features

- + Whole blood three-part differential hematology control
- + Available in three clinically significant levels
- + Plastic vials with pierceable caps for analyzer autosampling
- + Compatible with the most popular three-part differential hematology analyzers
- + 30-day open-vial stability
- + 190-day closed-vial stability

### Benefits

- + Helps clinical laboratories meet quality requirements
- + Established assay ranges provide less room for error
- + Long shelf life reduces the number of shipments and associated costs
- + Fewer lot-to-lot correlations save time and resources
- + Access to *STATS*®, a free interlaboratory quality control program with peer group data comparison and online submission

### Ordering information

Level	Description	Catalog#
Low, Normal, High	3 x 2.5 mL	218755
Low, Normal, High	3 X 4.5 mL	218776
Low	6 x 2.5 mL	218993
Normal	6 x 2.5 mL	218758
Normal	6 x 4.5 mL	218995
High	6 x 2.5 mL	218994
Low, Normal, High	18 x 2.5 mL	218750
Low, Normal, High	18 x 4.5 mL	218770



## Para 12<sup>®</sup> Plus

Para 12 Plus is a whole blood assayed hematology control formulated for 5-part differential instruments, including Abbott<sup>®</sup> CELL-DYN Ruby<sup>®</sup> and HTI<sup>®</sup> MicroCC-25 Plus. The control features vials with pierceable caps for autosampling and is available in low, normal and high levels. Each vial label is barcoded to assist with quality control data collection, eliminating the possibility of transcription errors.

### Features

- + Whole blood 5-part differential hematology control
- + Available in three clinically significant levels
- + Plastic vials with pierceable caps for analyzer autosampling
- + Compatible with Abbott CELL-DYN Ruby and HTI MicroCC-25 Plus hematology analyzers
- + 7-day open-vial stability
- + 75-day closed-vial stability

### Benefits

- + Helps clinical laboratories meet quality requirements
- + Established assay ranges provide less room for error
- + Long shelf life reduces the number of shipments and associated costs
- + Fewer lot-to-lot correlations save time and resources
- + Access to *STATS*<sup>®</sup>, a free interlaboratory quality control program with peer group data comparison and online submission

### Ordering information

Level	Description	Catalog#
4 Low	4 x 3.0 mL	218924
4 Normal	4 x 3.0 mL	218914
4 High	4 x 3.0 mL	218934
4 Low, 4 Normal, 4 High	12 x 3.0 mL	218913



## STaK-Chex® Plus Retics

CE

STaK-Chex Plus Retics is a whole blood five-part white cell differential control that includes reticulocytes and nucleated red blood cells. It is the only combined hematology control that includes all CBC parameters, reticulocytes and nucleated red blood cells, which can be analyzed in a single run. STaK-Chex Plus Retics is compatible with the Beckman Coulter® UniCel® DxH® 600/800/900/690T hematology analyzers.

### Features

- + The only combined control that includes all CBC parameters, reticulocytes and nucleated RBC
- + Available in three clinically significant levels
- + Plastic vials with pierceable caps for analyzer autosampling
- + Assay values are available for download
- + 14-day open-vial stability  
105-day closed-vial stability
- + Barcodes on vial labels and assay

### Benefits

- + Helps clinical laboratories meet quality requirements
- + Established assay ranges provide less room for error
- + Long shelf life reduces the number of shipments and associated costs
- + Fewer lot-to-lot correlations save time and resources
- + Access to *STATS*®, a free interlaboratory quality control program with peer group data comparison and online submission
- + Barcodes allow for automated parameter onboarding

### Ordering information

Description	Catalog#
4 x 4.5 mL (4 Low)	225480
4 x 4.5 mL (4 Normal)	225481
4 x 4.5 mL (4 High)	225482
12 x 4.5 mL (12 Normal)	225483
12 x 4.5 mL (4 Low, 4 Normal, 4 High)	225485

# HbA1c



## A1c-Cellular®

- + Available in two clinically significant levels.
- + Plastic vials with pierceable caps for analyzer autosampling.
- + Appropriate for immunoassay and ionic exchange HPLC methodologies.
- + Assayed on the top HbA1c analyzers.
- + 30-day open-vial stability.
- + 190-day closed-vial stability.

**Streck manufactures an HbA1c control that evaluates the entire testing process. This gives laboratories confidence in the accuracy of their instruments and the validity of patient results.**

### Superior Science

- + Manufactured with human red blood cells.
- + Distinct approach to handling cells for replicating patient samples.
- + Validation of the entire HbA1c process, including the lysing of the red blood cells.
  - Ensures HbA1c results for accurate classification of diabetic patients.
- + Identification of compromised results for quick, accurate detection of instrument issues.
- + Reduction of downtime and repeated tests.
- + Confidence in definitive results that are trusted by clinicians.

### Ease of Use

- + Controls and linearity for your HbA1c testing process.
- + Formulated and available for both immunoassay and HPLC methodologies.

### Comprehensive Support

- + Technical Support team consists of Medical Laboratory Scientists, to assist with product questions.
- + Dedicated Sales and Customer Care team available at 800.228.6090.
- + Streck STATS-Link® program is an effective way to evaluate the results of your lab versus a peer group.

Manufacturer	System/Software	Current Reagent
Abbott® Laboratories	ARCHITECT® (chemistry)	Abbott Assay 4P52-20
Beckman Coulter®	AU480, AU640, AU680	HbA1c
Beckman Coulter	UniCel® DxC® 600/800 Synchron®	HbA1c3
Bio-Rad®	D-10	D-10 Hemoglobin A1c
Bio-Rad	VARIANT II TURBO	VARIANT II TURBO 1.0 Kit, VARIANT II TURBO 2.0 Kits
Ortho Clinical Diagnostics®	VITROS® 5, 1 FS Systems V2.8 & Above; VITROS 4600/5600 Systems V3.0 & Above VITROS XT 7600	VITROS HbA1c Reagent Kit, Calibrator Kit 31
Roche® Diagnostics	cobas INTEGRA® 400 plus, cobas® c311, c 501/502 / c503	Tina-quant® Hemoglobin A1c (HbA1c) Gen.3
Siemens Healthineers®	Dimension Series, Atellica®	Siemens® Dimension (A1C), Atellica CH A1c_E
Tosoh® Bioscience	G8	Tosoh G8 Auto HPLC reagent

## Ordering Information

Product	Description	Catalog Number
A1c-Cellular®	2 x 2.0 mL (Level 1 & 2)	211130
	6 x 2.0 mL (Level 1 & 2)	211124



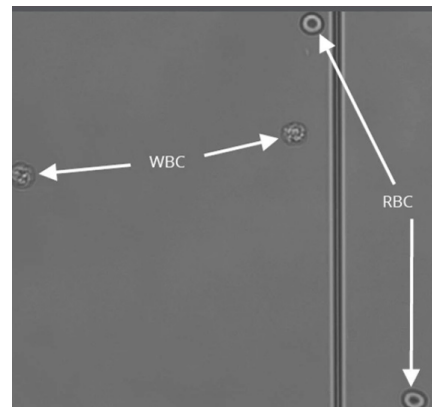
# Körperflüssigkeiten

## Address the 3 Cs of manual body fluid QC with Cell-Chex®

### Counts

**QC Need:** Accurate RBC and WBC counts from patient sample.

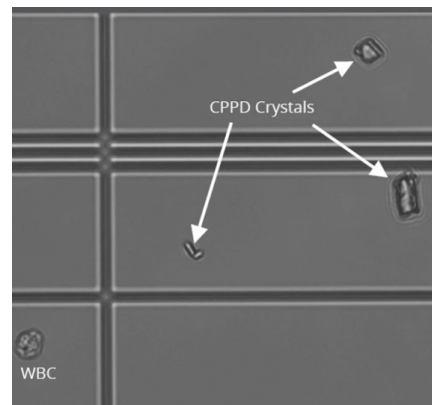
**How Cell-Chex Solves It:** Cell-Chex contains biconcave RBCs and five types of morphologically distinct WBCs. These cells are easy to differentiate and have morphology representative of fresh patient samples, unlike other body fluid controls on the market. This ensures accurate and precise counts using hemacytometers.



### Crystals

**QC Need:** Ability to identify crystals in synovial fluid samples.

**How Cell-Chex Solves It:** Cell-Chex is the only manual body fluid control that contains crystals. They can be easily identified without interfering with RBC and WBC counts using a hemacytometer or WBC differential counts using a cytocentrifuge. Real CPPD and urate crystals can be accurately differentiated based on morphology and polarized light microscopy.



### Competencies

**QC Need:** A control that meets CAP quality requirements.

**How Cell-Chex Solves It:** Cell-Chex validates the entire cell qualification and quantification procedure. The multi-level control has a long shelf life to reduce the number of shipments and associated costs.



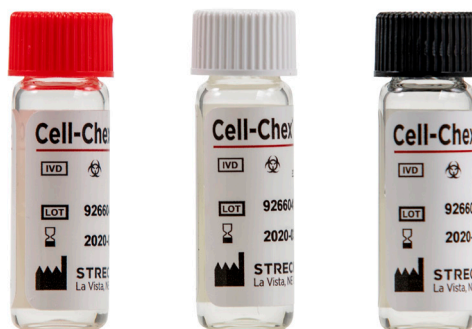
**Body fluid testing can provide important insight into patient health, but only if the methods and results are effective and accurate.**

## Do you feel confident in the control you are using?

**Cell-Chex®** is a multi-level manual cerebrospinal and body fluid control for evaluating the accuracy and precision of hemacytometer RBC and WBC counts, urate and CPPD crystal identification and manual WBC differential procedures.

## Here's why it's a good fit for your lab:

- + Validates the entire cell qualification and quantification procedure
- + Resembles a patient sample
- + Easily incorporates into sample preparation protocols



## Ordering Information

Description	Catalog Number
3 x 2.0 mL L1-UC, L1-CC, L2	212431
2 x 2.0 mL L1-CC	212429
6 x 2.0 mL L1-CC	212430
4 x 2.0 mL L1-UC, L2	212420
6 x 2.0 mL L2	212424
12 x 2.0 mL L1-UC, L2	212425
6 x 2.0 mL L1-UC	212432

# Körperflüssigkeiten



## Sperm-Chex®



Sperm-Chex is a manual sperm count control that contains real stabilized sperm cells, not latex beads. Competitor quality controls contain latex beads which do not have the same chamber loading or optical characteristics. The manual sperm count control can be handled like a patient sample and is available in two clinically significant levels to help validate the quantification of sperm counting by manual methods.

### Features

- + A manual sperm count control that contains real sperm cells
- + Available in two clinically significant levels
- + Same chamber loading or optical characteristics as a patient sample
- + Compatible with hemacytometers and other counting chambers
- + 42-day open-vial stability
- + 12-month closed-vial stability

### Benefits

- + Helps clinical laboratories meet quality requirements for manual sperm counts
- + Lab technologists can be assured that the sperm analysis process is being thoroughly tested for sperm cell quantification
- + Long shelf life reduces the number of shipments and associated costs
- + Access to *STATS*®, a free interlaboratory quality control program with peer group data comparison and online submission

### Ordering information

Level	Description	Catalog#
Level 1, Level 2	2 x 300 µL	230202





## Sperm-Chex® Post VC

CE

Sperm-Chex Post VC is a post-vasectomy sperm count control that contains real stabilized sperm cells, not latex beads. Competitor quality controls contain latex beads which do not have the same chamber loading or optical characteristics. The manual sperm count control can be handled like a patient sample and provides a positive and negative sperm count sample to help validate the manual post-vasectomy sperm count procedure.

### Features

- + A post-vasectomy control that contains real sperm cells
- + Provides a positive and negative sperm count sample
- + Same chamber loading or optical characteristics as a patient sample
- + Compatible with hemacytometers and other counting chambers
- + 42-day open-vial stability
- + 12-month closed-vial stability

### Benefits

- + Helps clinical laboratories meet quality requirements for vasectomy sperm counts
- + Performs the same as a patient sample for chamber loading
- + Simulates the sperm cell concentration that lab technologists encounter in patient samples
- + Long shelf life reduces the number of shipments and associated costs

### Ordering information

Description	Catalog#
2 x 300 µL Positive, Negative	230200



## MDx-Chex® for BCID2

CE

MDx-Chex for BCID2 is a patient-like full process control designed to validate the entire analytical process of the BIOFIRE BCID2 Panel, including cell lysis, DNA extraction, purification and removal of PCR inhibitors in addition to qPCR amplification, detection and analysis. MDx-Chex for BCID2 covers all targets tested on the BIOFIRE BCID2 Panel: 43 bacteria, yeasts and antimicrobial resistance gene targets packaged in 10 single-use vials, 5 for Gram (-) bacteria and 5 for Gram (+) bacteria and yeasts. The microorganisms are intact, inactivated and suspended in a matrix of stabilized red blood cells, white blood cells and blood culture media components, providing you with a control that can be mixed and pipetted like a positive patient sample, reducing the risk of cross-contamination, pipetting errors or other preanalytical variables that may cause incorrect results.

## Features

- + Patient-like matrix of inactivated microorganisms, blood cells and culture media components
- + Can be directly used on the BIOFIRE FilmArray® Torch and 2.0 platforms
- + Provides complete coverage of all 43 BIOFIRE BCID2 Panel targets

## Benefits

- + Challenges and verifies the entire analytical process of the BIOFIRE BCID2 Panel
- + Single-use vials reduce preanalytical variables such as pipetting errors and cross-contamination
- + Easy to use – simply pipette like a patient sample

## Ordering Information

Produktname	IVD Status	Einheiten x Volumen	Katalog #
for BCID2 (5x Gram-negativ & 5x Gram-positiv)	CE-IVD	5 rxns (10x 200 µl)	250065



## MDx-Chex® for BC-GP and MDx-Chex® for BC-GN

MDx-Chex for BC-GP and BC-GN are patient-like full process controls designed to validate the entire analytical process of the Luminex VERIGENE BC-GP and BC-GN Panels, including automated nucleic acid extraction, DNA purification, hybridization of target DNA to the microarray, hybridization of gold nanoparticles to target DNA and silver staining of hybridized probes. MDx-Chex for BC-GP and BC-GN cover all targets tested with Luminex VERIGENE for BC-GP or BC-GN, respectively. Microorganisms are intact, inactivated and suspended in a matrix of stabilized red blood cells, white blood cells and blood culture media components, providing you with a control that can be mixed and pipetted like a positive patient sample, reducing the risk of cross-contamination, pipetting errors or other pre-analytical variables that may cause incorrect results.

### Features

- + Patient-like matrix of inactivated microorganisms, blood cells and culture media components
- + Can be directly used on the Luminex VERIGENE system
- + Complete coverage of all BC-GP or BC-GN Panel targets in a single vial
- + Negative controls contain only blood cells and culture media components for a true patient-like negative control

### Benefits

- + Challenges and verifies the entire analytical process of the Luminex VERIGENE assays
- + Reduces preanalytical variables such as pipetting errors and cross-contamination
- + Easy to use — simply pipette like a patient sample

### Ordering Information

Produktname	IVD Status	Einheiten x Volumen	Katalog #
for BC GP (5x positiv & 5x negativ)	RUO	5 rxns	250079
for BC GN (5x positiv & 5x negativ)	RUO	5 rxns	250080

# Erythrozytensedimentationsrate (SED-Rate)



## ESR-Chex



ESR-Chex is a whole blood sed-rate control for automated and manual ESR testing methods. It is available in two levels and is assayed for the most frequently used sedimentation rate tubes in conjunction with the Classical Westergren, Modified Westergren and Wintrobe methods.

### Features

- + Ready-to-use whole blood control resembles patient sample
- + Available in two levels: normal and abnormal
- + Assayed for both manual and automated sed-rate testing methods
- + 95-day open-vial stability
- + 365-day closed-vial stability

### Benefits

- + Helps clinical laboratories meet quality requirements
- + Alerts the technologist to possible problems that may affect the accuracy of patient results
- + Long shelf life reduces the number of shipments and associated costs
- + Access to *STATS*®, a free interlaboratory quality control program with peer group data comparison and online submission

### Ordering information

Level	Description	Catalog#
Level 1 & 2	2 x 9.0 mL	214102
Level 1 & 2	4 x 9.0 mL	214104
Level 1 & 2	8 x 9.0 mL	214108
Level 1 & 2	12 x 9.0 mL	214112



## Sickle Cell Control and Solubility Kit

Screening assay and controls to test for the presence of sickling hemoglobin

**SICKLEDEX®** is a qualitative solubility test that can detect the presence of sickling hemoglobin in human blood samples within 6 minutes. With this kit, your laboratory is supplied with items necessary to perform easy and efficient sickle solubility testing.

### Here's why it's a good fit for your lab:

- + Provides test results in 6 minutes
- + Uses only 20 µL of patient or control sample
- + Is available in multiple test configurations (100-, 50- and 12-test kits)



**Sickie-Chex®** is a positive and negative whole blood control available for use with sickle cell screening tests.

### Here's why it's a good fit for your lab:

- + Performs like a patient sample
- + Does not require reconstitution
- + Has compatibility with **SICKLEDEX** and other solubility tests

## Ordering Information

Description	Catalog Number
<i>SICKLEDEX®</i> 100-Test Kit	217657
<i>SICKLEDEX</i> 50-Test Kit	217660
<i>SICKLEDEX</i> 12-Test Kit	217661
<i>SICKLEDEX</i> Test tube rack	217659
Disposable Test Tubes (50 count)	217662
Disposable Micropipettes (50 count)	217663
Sickie-Chex® 2 x 2.5 mL (Positive and Negative)	217653
Sickie-Chex 4 x 2.5 mL (Positive and Negative)	217654



## About STRECK

Established in 1971, Streck develops quality control and sample stabilization products that help clinical and research laboratories feel confident in the validity of their results. Streck products are manufactured in La Vista, Nebraska, and delivered to thousands of labs worldwide.



## Ordering Information



HiSS Diagnostics GmbH ist Ihr offizieller Vertriebspartner für Produkte von STRECK. Wir unterstützen Sie bei der Etablierung individueller Workflows und beraten Sie persönlich zu Produktspezifikationen und Anwendungsbereichen.



**HiSS**  
Diagnostics

Tullastraße 70  
79108 Freiburg

 [www.hiss-dx.de](http://www.hiss-dx.de)  
 [info@hiss-dx.de](mailto:info@hiss-dx.de)

 (+49) 0761-389 49-0  
 (+49) 0761-389 49-20

